

1 Scales in Two Octaves

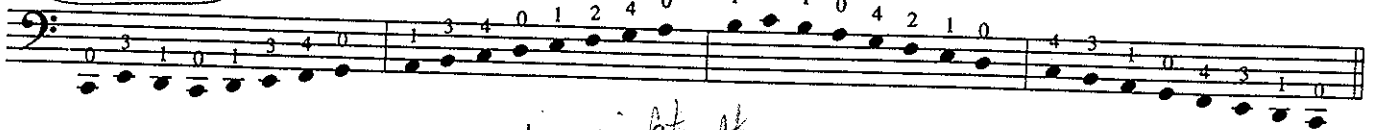
Groups of eight notes. PATTERNS: B1, B2, B4, B8, B16
R1, R2, R4, R8, R16

Primary Patterns:

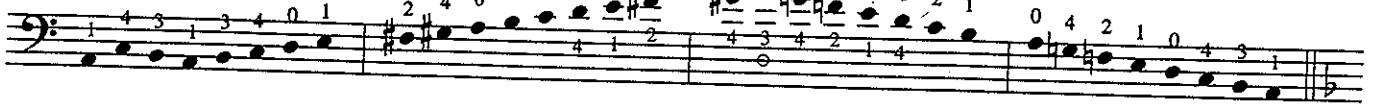


Two octave scales should also be studied as acceleration exercises 2, 4, 8, 16 and 32 notes to the bow. For an explanation of acceleration exercises please turn to page 11.

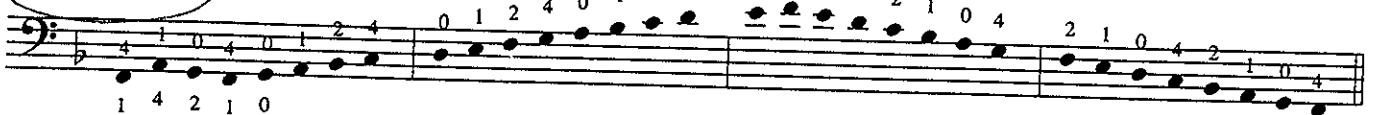
C Major



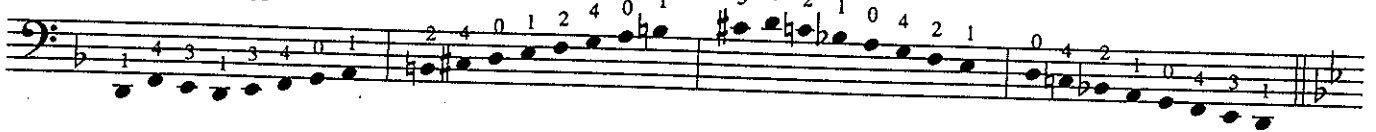
A Melodic Minor



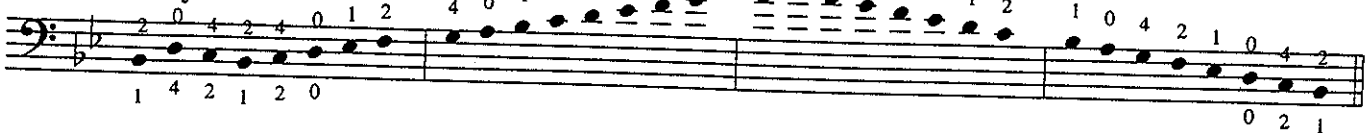
F Major



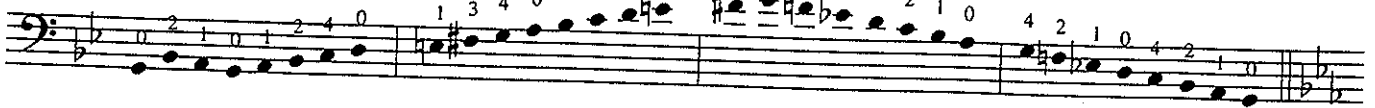
D Melodic Minor



B-Flat Major



G Melodic Minor



E-Flat Major

2 0 4 2 4 0 1 2 | 4 0 1 2 1 2 4 1 | 3 4 3 1 4 2 1 2 | 1 0 4 2 1 0 4 2

1 4 2 1 2 0 | 0 2 1

C Melodic Minor

0 2 1 0 1 2 4 0 | 1 3 4 0 1 2 4 1 | 3 4 2 1 4 2 1 0 | 4 2 1 0 4 2 1 0

A-Flat Major

1 4 2 1 2 4 1 2 | 4 1 2 4 1 2 4 1 | 3 4 3 1 4 2 1 4 | 2 1 4 2 1 4 2 1

2 3 2

F Melodic Minor

1 4 3 1 3 4 1 2 | 4 1 2 4 1 2 4 1 | 3 4 2 1 4 2 1 4 | 2 1 4 3 1 4 3 1

D-Flat Major

1 4 2 1 2 4 1 2 | 4 1 2 4 1 2 4 1 | 3 4 3 1 4 2 1 4 | 2 1 4 2 1 4 2 1

I II

B-Flat Melodic Minor

1 4 3 1 3 4 1 2 | 4 0 1 2 1 2 4 1 | 2 3 2 1 4 2 1 4 | 2 1 4 3 1 4 3 1

G-Flat Major

1 4 2 1 2 4 1 2 | 4 1 2 4 1 2 4 1 | 3 4 3 1 4 2 1 4 | 2 1 4 2 1 4 2 1

I

E-Flat Melodic Minor

1 4 3 1 3 4 1 2 | 4 0 1 2 1 2 4 1 | 3 4 2 1 4 2 1 4 | 2 1 4 3 1 4 3 1

1 2 4 1

B Major

1 4 2 1 2 4 1 2 | 4 1 2 4 1 2 4 1 | 2 3 2 1 4 2 1 4 | 2 1 4 2 1 4 2 1

I I

G-Sharp Melodic Minor

Musical notation for the G-Sharp Melodic Minor scale in bass clef. The scale is written across three measures. Fingerings are indicated by numbers 1-4 above the notes. The notes are G#2, A2, B2, C#3, D3, E3, F#4, G#4, A4, B4, C#5, D5, E5, F#5, G#5.

E Major

Musical notation for the E Major scale in bass clef. The scale is written across three measures. Fingerings are indicated by numbers 1-4 above the notes. Fret numbers II and I are written below the staff. The notes are E2, F#2, G#2, A2, B2, C#3, D3, E3, F#3, G#3, A3, B3, C#4, D4, E4.

C-Sharp Melodic Minor

Musical notation for the C-Sharp Melodic Minor scale in bass clef. The scale is written across three measures. Fingerings are indicated by numbers 1-4 above the notes. The notes are C#2, D2, E2, F#2, G#2, A2, B2, C#3, D3, E3, F#3, G#3, A3, B3, C#4, D4, E4.

A Major

Musical notation for the A Major scale in bass clef. The scale is written across three measures. Fingerings are indicated by numbers 1-4 above the notes. The notes are A2, B2, C#3, D3, E3, F#3, G#3, A3, B3, C#4, D4, E4, F#4, G#4, A4.

F-Sharp Melodic Minor

Musical notation for the F-Sharp Melodic Minor scale in bass clef. The scale is written across three measures. Fingerings are indicated by numbers 1-4 above the notes. The notes are F#2, G#2, A2, B2, C#3, D3, E3, F#3, G#3, A3, B3, C#4, D4, E4, F#4, G#4.

D Major

Musical notation for the D Major scale in bass clef. The scale is written across three measures. Fingerings are indicated by numbers 1-4 above the notes. The notes are D2, E2, F#2, G#2, A2, B2, C#3, D3, E3, F#3, G#3, A3, B3, C#4, D4, E4.

B Melodic Minor

Musical notation for the B Melodic Minor scale in bass clef. The scale is written across three measures. Fingerings are indicated by numbers 1-4 above the notes. The notes are B2, C#3, D3, E3, F#3, G#3, A3, B3, C#4, D4, E4, F#4, G#4, A4, B4.

G Major

Musical notation for the G Major scale in bass clef. The scale is written across three measures. Fingerings are indicated by numbers 1-4 above the notes. The notes are G2, A2, B2, C#3, D3, E3, F#3, G#3, A3, B3, C#4, D4, E4, F#4, G4.

E Melodic Minor

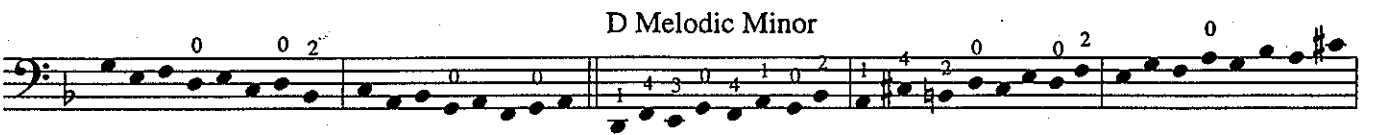
Musical notation for the E Melodic Minor scale in bass clef. The scale is written across three measures. Fingerings are indicated by numbers 1-4 above the notes. The notes are E2, F#2, G#2, A2, B2, C#3, D3, E3, F#3, G#3, A3, B3, C#4, D4, E4.

2

Broken Thirds In Two Octaves

Groups of eight notes. PATTERNS: *B1, B2, B4, B8*
R1, R2, R4, R8

Primary Patterns:



B-Flat Major

G Melodic Minor

E-Flat Major

I

C Melodic Minor

I

A-Flat Major

1 3 1 4 3

II

I

F Melodic Minor

3 4 1 3

3 4 1 3

III

II

I

3 4 1

3 4 1

D-Flat Major

3 1 4 3 III II I

B-Flat Melodic Minor

3 4 1 3 II I

3 4 1 3 I

F-Sharp Major

4 3 1 4 3 III II I II

D-Sharp Melodic Minor

3 4 1 3 IV III II I

II III IV

B Major

3 1 4 3 III II I

G-Sharp Melodic Minor

3 4 1 3 II I

3 4 1 3 I

E Major

Bass clef musical notation for E Major scale. The scale is written on a single staff with a key signature of two sharps (F# and C#). Fingerings are indicated by numbers 1-4. Positions III, II, and I are marked below the staff.

C-Sharp Melodic Minor

Bass clef musical notation for C-Sharp Melodic Minor scale. The scale is written on a single staff with a key signature of three sharps (F#, C#, G#). Fingerings are indicated by numbers 1-4. Positions III and II are marked below the staff.

Bass clef musical notation for C-Sharp Melodic Minor scale, continuing from the previous block. Position I is marked below the staff.

A Major

Bass clef musical notation for A Major scale. The scale is written on a single staff with a key signature of three sharps (F#, C#, G#). Fingerings are indicated by numbers 1-4. Positions (2) and (2) are marked above the staff.

F-Sharp Melodic Minor

Bass clef musical notation for F-Sharp Melodic Minor scale. The scale is written on a single staff with a key signature of four sharps (F#, C#, G#, D#). Fingerings are indicated by numbers 1-4. Positions III, II, and I are marked below the staff.

Bass clef musical notation for F-Sharp Melodic Minor scale, continuing from the previous block. Positions II, III, III, and IV are marked below the staff.

D Major

Bass clef musical notation for D Major scale. The scale is written on a single staff with a key signature of two sharps (F# and C#). Fingerings are indicated by numbers 1-4. Positions (4) and (4) are marked above the staff.

B Melodic Minor

Bass clef musical notation for B Melodic Minor scale. The scale is written on a single staff with a key signature of two sharps (F# and C#). Fingerings are indicated by numbers 1-4. Positions (4) and (4) are marked above the staff.

Bass clef musical notation for B Melodic Minor scale, continuing from the previous block. Position 3 4 1 2 4 is marked below the staff.

3

Arpeggios In Two Octaves

Groups of six notes. PATTERNS: *B1, B2, B3, B6*
R1, R2, R3, R6

Primary Patterns:

Primary Patterns: Four groups of six notes in 6/8 and 3/4 time signatures. The first two groups are in 6/8 time, and the last two are in 3/4 time. Each group consists of six notes with fingerings indicated by numbers 1-4.

Arpeggio exercises for C Major, A Minor, F Major, D Minor, B-Flat Major, G Minor, E-Flat Major, and C Minor. Each exercise is shown in two octaves on a bass clef staff with fingerings indicated by numbers 1-4.

C Major: $0, 3, 0, 4, 1, 4, 2, 4, 1, 4, 0, 3$ | $4, 1, 4, 2, 1, 3, 2, 3, 1, 2, 4, 0, 1, 4$

A Minor: $4, 1, 4, 2, 1, 3, 0, 3, 4, 1, 2, 4, 1, 4, 0, 1, 4$

F Major: $4, 1, 4, 2, 1, 4, 2, 4, 1, 2, 4, 1, 4, 1, 4, 0, 2, 0, 4, 1, 4, 0, 2, 0, 1, 4, 1, 4$

D Minor: $4, 1, 4, 2, 4, 1, 4, 2, 4, 1, 4, 0, 2, 0, 4, 1, 4, 0, 2, 0, 1, 4, 1, 4$

B-Flat Major: $4, 1, 4, 2, 1, 3, 2, 3, 1, 2, 4, 1, 4, 0, 1, 4, 2, 1, 3, 2, 3, 1, 2, 4, 0, 1$

G Minor: $4, 1, 4, 2, 1, 3, 2, 3, 1, 2, 4, 1, 4, 0, 1, 4, 2, 1, 3, 2, 3, 1, 2, 4, 1, 4$

E-Flat Major: $4, 1, 4, 2, 4, 1, 4, 2, 4, 1, 4, 2, 4, 1, 4, 2, 0, 2, 1, 1, 4, 2, 0, 0, 2, 0, 2, 0$

C Minor: $0, 2, 0, 4, 1, 4, 2, 4, 1, 4, 2, 4, 1, 4, 0, 2, 0, 4, 1, 4, 2, 4, 1, 4, 0, 2, 0$

A-Flat Major 4 1 4 2 1 3 2 3 1 2 4 1 F Minor 4 1 4 2 1 4 2 4 1 2 4 1

D-Flat Major 4 1 4 2 4 1 4 2 4 1 4 1 B-Flat Minor 4 1 4 2 1 3 2 3 1 2 4 1

F-Sharp Major 4 1 4 2 1 4 2 4 1 2 4 1 D-Sharp Minor 4 1 4 2 4 1 4 2 4 1 4 1

B Major 4 1 4 2 1 3 2 3 1 2 4 1 G-Sharp Minor 4 1 4 2 4 1 3 2 3 1 2 4 1

IV

E Major 4 1 4 2 1 4 2 4 1 4 1 4 1 C-Sharp Minor 4 1 4 2 4 1 4 2 4 1 4 1

A Major 4 1 4 2 1 3 2 3 1 2 4 1 F-Sharp Minor 4 1 4 2 4 1 2 4 1 2 4 1

D Major 4 1 4 2 4 1 4 2 4 1 4 1 B Minor 4 1 4 2 1 3 2 3 1 2 4 1

G Major 4 1 4 2 1 3 2 3 1 2 4 1 E Minor 4 1 4 2 4 1 4 2 4 1 4 1